

SD-T TEMP. SIGNAL CONVERTER & ISOLATOR

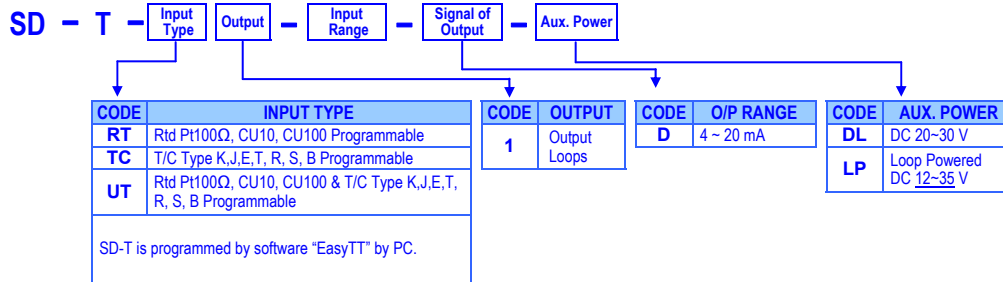
FEATURE

- Input Type and range programmable for RTD Pt100Ω, Pt1000Ω, CU10, CU100; Thermo-couple type K, J, E, T, R, S, B
- Output 4~20mA with loop power or auxiliary power available
- DIN rail mounting with Ultra slim in 7.6 mm profile
- CE Approved & RoHS



Ultra Slim (7.6mm) type

ORDERING INFORMATION



TECHNICAL DATA

Input (Programmable by "TTPro" software of PC)

RTD Input Range	Input Impedance	T/C Input Range	Input Impedance
Pt100Ω(-200~+850°C)	≥ 10M ohm	Type K(-200~+1372°C)	≥ 1M ohm
Pt1000Ω(-200~+250°C)	≥ 10M ohm	Type J(-200~+1200°C)	≥ 1M ohm
CU10(-50~+150°C)	≥ 10M ohm	Type E(-200~+900°C)	≥ 1M ohm
CU100(-50~+150°C)		Type T(-200~+400°C)	≥ 1M ohm
		Type R(0~+1768°C)	≥ 1M ohm
		Type S(0~+1768°C)	≥ 1M ohm
		Type B(320~+1820°C)	≥ 1M ohm

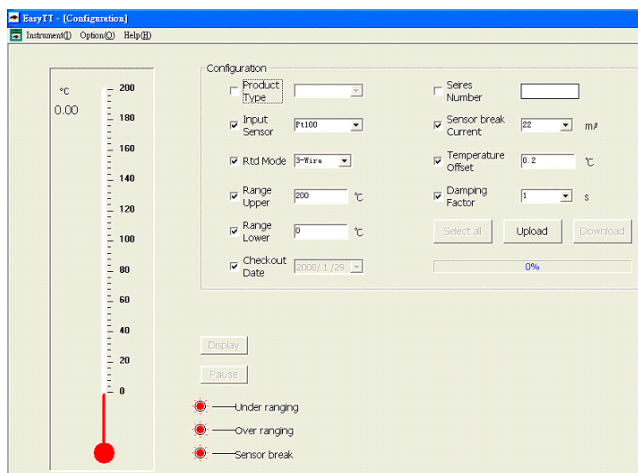
Analogue output

Power Type	Output Range	Accuracy	Load Resistance
Auxiliary Power	4 ~ 20mA	≤ ±0.2% of F.S.	≤ 550Ω;
Loop Power	4 ~ 20mA	≤ ±0.2% of F.S.	≤ (Vs-12) / 0.022 (ohm)

- Cold Junction:** -40~85°C, Error ≤ 1.0°C
Response time: ≤ 100msec (10%~90% of F.S.)
Output ripple: ≤ ±0.1% of F.S.
Sensor Break Protect: Pull up to 22mA or Push down to 3.8mA programmable

Programming Software

We offer the programming software and programming cable(option). Please contact with our sales department if inquiry or download from our website.



Environmental

- Operating temp.:** -20~60 °C
Operating humidity: 20~95% RH, Non-condensing
Temperature drift: 0.1% F.S./10°C
Storage temperature: -20~70 °C
Protection: IP 42

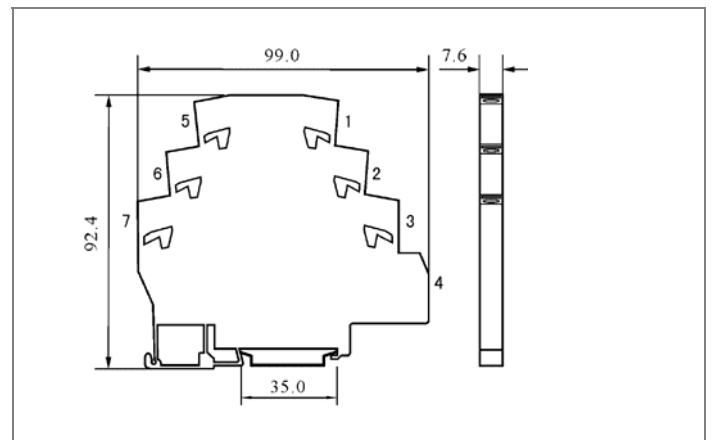
Mechanical

- Dimensions:** 7.6mm(W) x 99mm(H) x 92.4mm(D)
Housing: Self-extinguishing, black ABS, UL94V0
Terminals: Sprint terminal, up to 1.0 mm² wire
Mounting: 35mm DIN rail (EN50022)

Specification

- EMC:** EN 61326-1
Electric Isolation: Auxiliary Power type: AC 1.5KV for 1min; Between Power/Input/Output
 Loop Power type: AC 1.5KV for 1min; Between Input / Output
Insulation resistance: ≥ 100MΩ at 500Vdc

DIMENSIONS



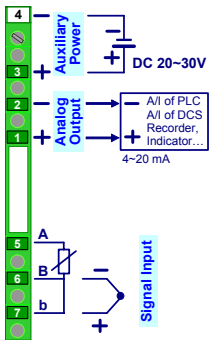
Power

- Power supply:** Auxiliary power: DC 20~30V
 Loop power: DC 12~35V
Power consumption: Auxiliary power type ≤ 60mA at 24V, 20mA

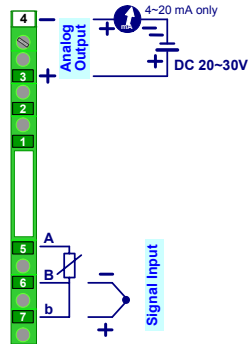
CONNECTION DIAGRAM

Please check the voltage supply first, and then connect to the specified terminals. It is recommended that power supplied to the meter be protected by a fuse or circuit breaker.

Auxiliary Powered type



Loop Powered type



Terminal and Wiring

